



8 Loughview Grange Gawleys Gate, Craigavon, BT67 0XF

Offers over £249,950



Marc Fegan's View

Homes like this don't hang about, especially this close to Lough Neagh. No.8 Loughview Grange is a cracking four-bed detached with great space inside and out. The open-plan kitchen, dining and living area is where you'll spend most of your time, with doors straight out to the garden and views towards the lough, while the separate lounge with bay window and multi-fuel stove gives you that cosy spot when you need it. Upstairs there's plenty of room with three doubles, a single and the primary with ensuite, and outside a good-sized garden to enjoy. With no onward chain and an asking price of offers over £249,950, give us a wee call to book a viewing, it's a lovely home in a really popular area.

Property Summary

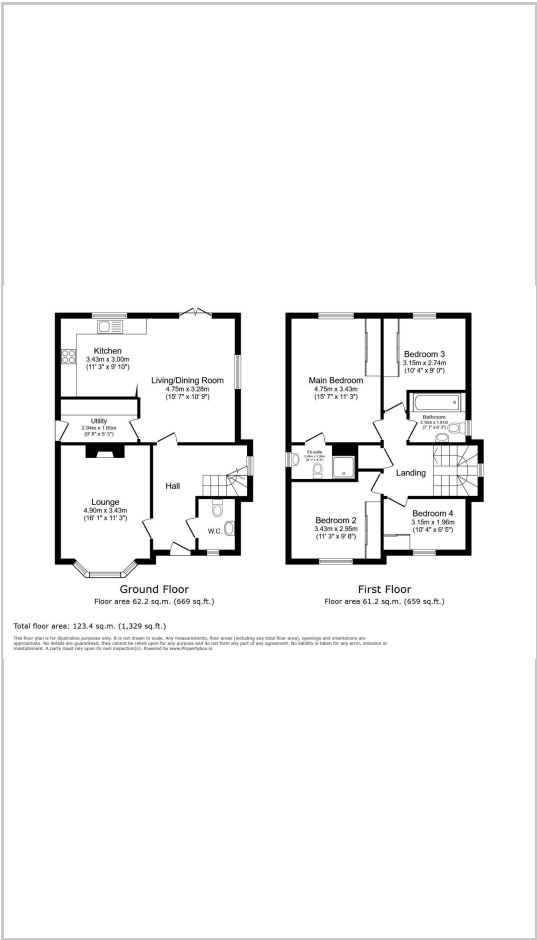
8 Loughview Grange, is a beautifully presented four bedroom detached home located in a highly sought after residential development close to Lough Neagh.



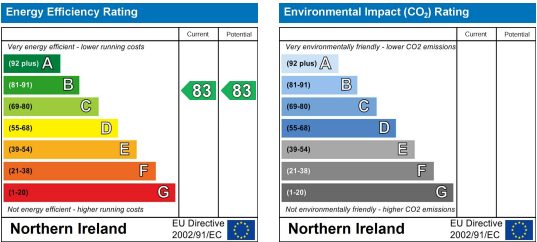
Area Map



Floor Plans



Energy Efficiency Graph



These particulars, whilst believed to be accurate are set out as a general outline only for guidance and do not constitute any part of an offer or contract. Intending purchasers should not rely on them as statements of representation of fact, but must satisfy themselves by inspection or otherwise as to their accuracy. No person in this firm's employment has the authority to make or give any representation or warranty in respect of the property.