



4 Brewery Lane

, Dromore, BT25 1AH

Offers in the region of £129,950

Cairns and Downing are delighted to present onto the sales market this very practicable 2 bedroom mid terrace bungalow in the heart of Dromore.

While the property is in need of some decoration throughout it will make a very comfortable home for those who wish to downsize or indeed those looking for a first home.

Internally the property is comprised of entrance hall through to comfortable living room with glass fronted fire, a modern kitchen with a range of high and low level units, two bedrooms, one single and one double, 2 storage cupboards and the wet room which is fully tiled. Beyond the kitchen is the rear hall which could make an ample utility room or indeed leave scope to extend the kitchen.

Externally the property has a large paved area to the front and a large yard to the rear. The property has Oil Fired Central heating and double glazing.

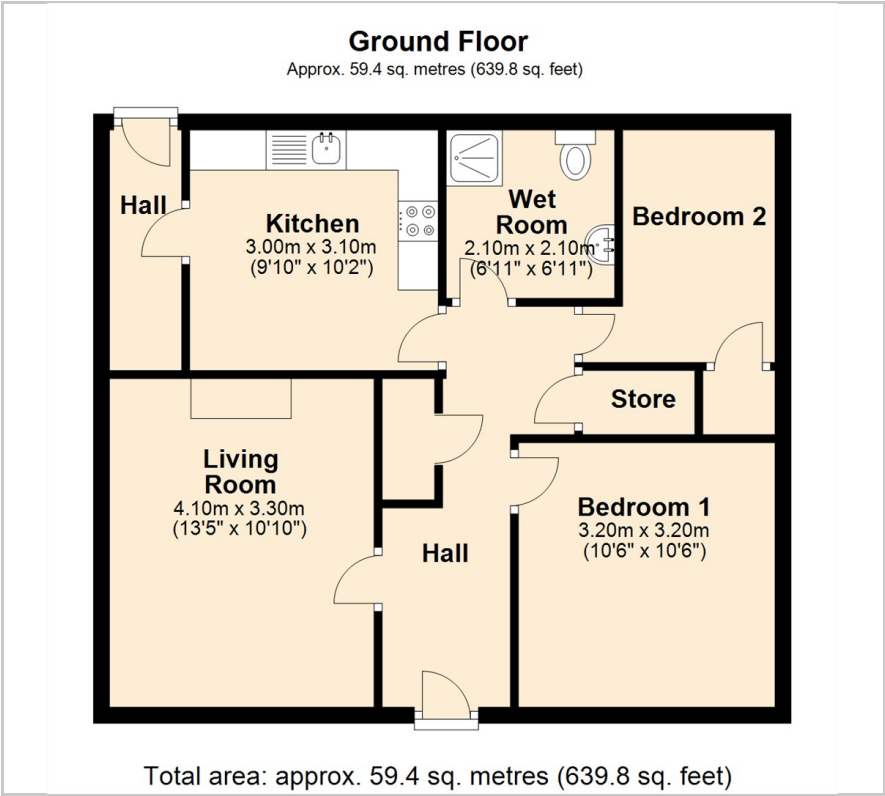
Viewing

Please contact our Cairns and Downing Office on 02896 223 011 if you wish to arrange a viewing appointment for this property or require further information.

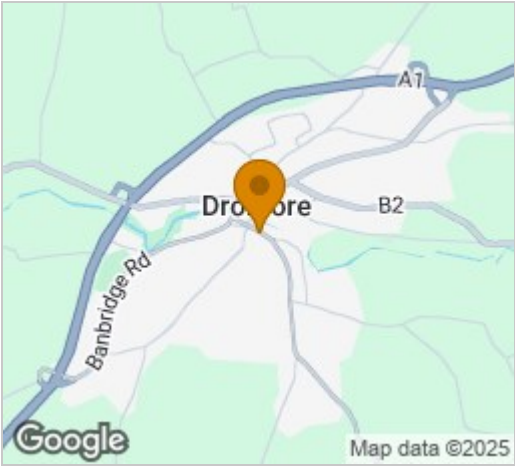
- 2 Bedroom Mid Terrace Property in the Heart of Dromore
- Walking Distance to town centre
- OFCH
- Double Glazing
- In need of redecoration
- Large front and rear yard areas
- Glass fronted fire
- Wet room
- Modern Kitchen



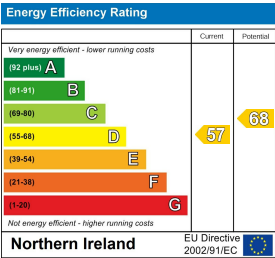
Floor Plan



Area Map



Energy Efficiency Graph



These particulars, whilst believed to be accurate are set out as a general outline only for guidance and do not constitute any part of an offer or contract. Intending purchasers should not rely on them as statements of representation of fact, but must satisfy themselves by inspection or otherwise as to their accuracy. No person in this firms employment has the authority to make or give any representation or warranty in respect of the property.