

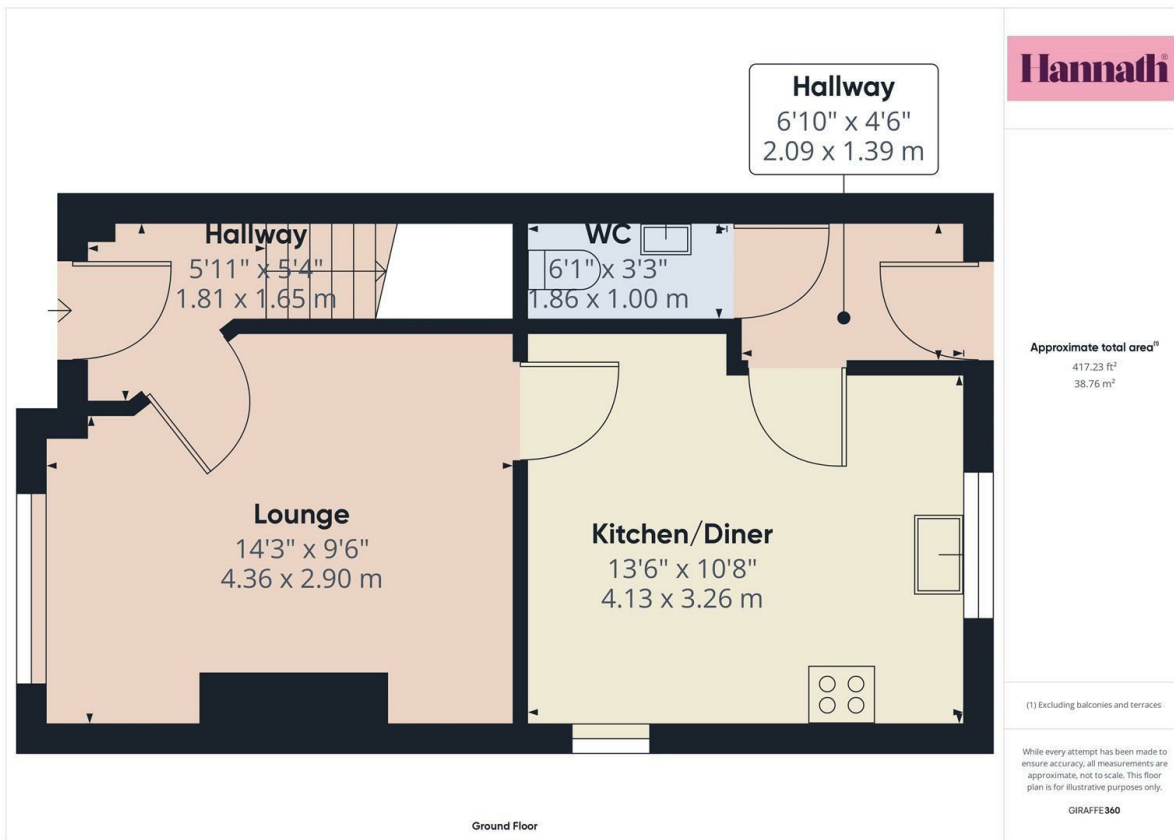


## 1 Lisnisky Court, Portadown, Craigavon, County Armagh, BT63

£900 PCM

- Three Bedroom Semi-Detached Property
- Well-Presented Throughout
- Unfurnished
- Deposit: £900
- Off-Street Parking
- GFCH
- Popular Residential Area Close to Craigavon Area Hospital
- Fully Enclosed Rear Garden

**Hannath**

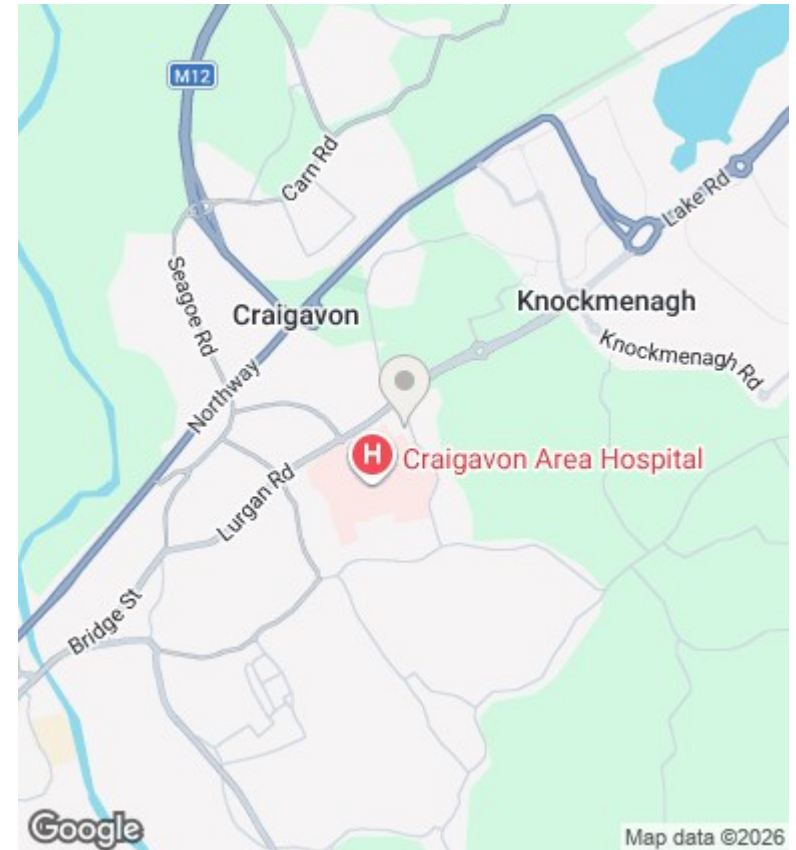


Approximate total area\*  
417.23 ft<sup>2</sup>  
38.76 m<sup>2</sup>

(\*) Excluding balconies and terraces

While every attempt has been made to ensure accuracy, all measurements are approximate, not to scale. This floor plan is for illustrative purposes only.

GIRAFFE360



## Directions

Located just off Lisnisky Lane, Portadown.

## Viewings

Viewings by arrangement only. Call 02838 399911 to make an appointment.

## Council Tax Band

Northern Ireland

## EPC Rating:

C

Energy Efficiency Rating		Current	Potential
Very energy efficient - lower running costs			
(92 plus)	A		
(81-91)	B		
(69-80)	C	72	73
(55-68)	D		
(39-54)	E		
(21-38)	F		
(1-20)	G		
Not energy efficient - higher running costs			
Northern Ireland		EU Directive 2002/91/EC	