

Tim Martin
— .co.uk



**69 Carsonstown Road
Saintfield
BT24 7EB**

**Offers Around
£415,000**

www.timmartin.co.uk
Telephone 028 97 568300

SUMMARY

A spacious modern detached residence with detached garage with an option to purchase up to c. 15 acres or thereabouts of agricultural lands by separate negotiation.

The property was built in recent years and has been constructed to a high standard with a small number of finishings to be completed.

The accommodation is spacious and includes, lounge, fitted integrated kitchen/family room, laundry room, four double bedrooms including two en suite and a principal shower room. A large garage with adjoining store, wc and stone garden shed provide good storage.

The property is a short drive from Saintfield amenities including boutiques, coffee shops, churches, library and doctors surgery as well as Academy Primary and Saintfield High Schools. Saintfield boasts an excellent public transport service and road network allows for a convenient commute to Belfast, Lisburn and Downpatrick; as well as schools in the surrounding towns and Belfast.

FEATURES

- Spacious, Modern Detached Residence In A Pleasing Rural Location
- 2 Reception Rooms
- Four Bedrooms Including Two En Suite
- Fitted Integrated Kitchen / Family Room
- Laundry Room And Shower Room To Ground Floor
- Oil Fired Central Heating And Double Glazing
- Detached Garage With Adjoining Store, WC And Stone Garden Shed
- Agricultural Lands Available to Purchase by Separate Negotiation Extending To Approximately 10 Acres and A Further 5 Acres Are Part Of Ballygeely Bog
- Ideally Located with Saintfield being a Short Drive Away

Entrance Hall

Lounge

18'0 x 16'2 (5.49m x 4.93m)

Maximum Measurements

L shaped; tv aerial connection point; LED spot lighting.

Kitchen / Living Area

28'8 x 16'2 (8.74m x 4.93m)

1½ tub single drainer stainless steel sink unit with mixer taps; extensive range of high gloss eye and floor level cupboards and drawers; formica worktops; Kenwood fridge/freezer; Kenwood range cooker with stainless steel extractor unit over; integrated Indesit dishwasher; matching island unit with fitted cupboards and formica worktop; breakfast bar; ceramic flagged floor; brick inglenook fireplace with enclosed cast iron stove on a tiled hearth with a timber beamed mantle over; tv and telephone connection points; LED spotlighting; double doors to rear.

Laundry Room

Single drainer stainless steel sink unit; range of eye and floor level cupboards and drawers; formica worktops; plumbed for washing machine and tumble dryer; part tiled walls; tiled floor; extractor fan; hotpress with pressurised hot water cylinder; part tiled walls.

Shower Room

9'3 x 5'10 (2.82m x 1.78m)

Plumbed for bath; vanity unit with wash hand basin, chrome mono mixer tap and cupboards under; close coupled wc; vertical chrome heated towel radiator; tiled floor; LED lighting; extractor fan.

Bedroom 1

12'6 x 10'9 (3.81m x 3.28m)

LED spotlighting; tv aerial connection point.

Bedroom 2 (En Suite)

14'7" x 12'11" (4.47m x 3.96m)

Maximum Measurements

LED spot lighting.

Shower Room

7'8 x 3'10 (2.34m x 1.17m)

White suite comprising, quadrant tiled shower base; plumbed for thermostatically controlled shower; plumbing for vanity unit; close coupled wc; chrome vertical heated towel radiator; LED spot lighting; extractor fan.

First Floor

Landing

9'0 x 8'0 (2.74m x 2.44m)

Bedroom 3

14'8 x 12'5 (4.47m x 3.78m)

Bedroom 4 (En Suite)

14'8 x 13'0 (4.47m x 3.96m)

Maximum Measurements

TV aerial connection point.

Shower Room**7'9 x 3'9 (2.36m x 1.14m)**

Fitted quadrant shower base; plumbed for wash hand basin; close coupled wc; chrome heated towel radiator; tiled walls; LED spotlighting; extractor fan.

Outside

Shared gravelled lane to gravelled parking to the front of the residence and leading to:-

Garage**29'1 x 17'7 (8.86m x 5.36m)**

Roller door; light and power point; door to store and WC.

Store**12'11 x 10'6 (3.94m x 3.20m)**

Light and power point.

WC**10'7 x 4'3 (3.23m x 1.30m)**

Wash hand basin.

Gardens

Warmflow oil fired boiler; PVC oil storage tank; an area has currently been fenced off for gardens, but is currently not made up.

Agricultural Lands - By Negotiation

The agricultural lands are sub-divided into four fields of which three fields are currently laid down to grass and are thought suitable for cutting and/or grazing purposes. The fourth field is made of a portion of Ballygeely Bog and is believed to extend to approximately 5 acres. The agricultural lands have a short gravel drive leading from the county road into the subject lands providing good vehicular access for farm machinery.

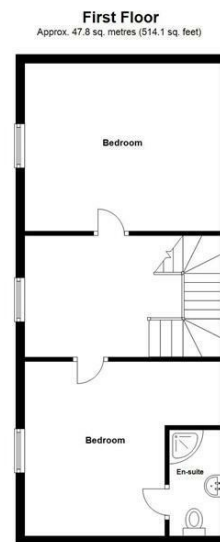
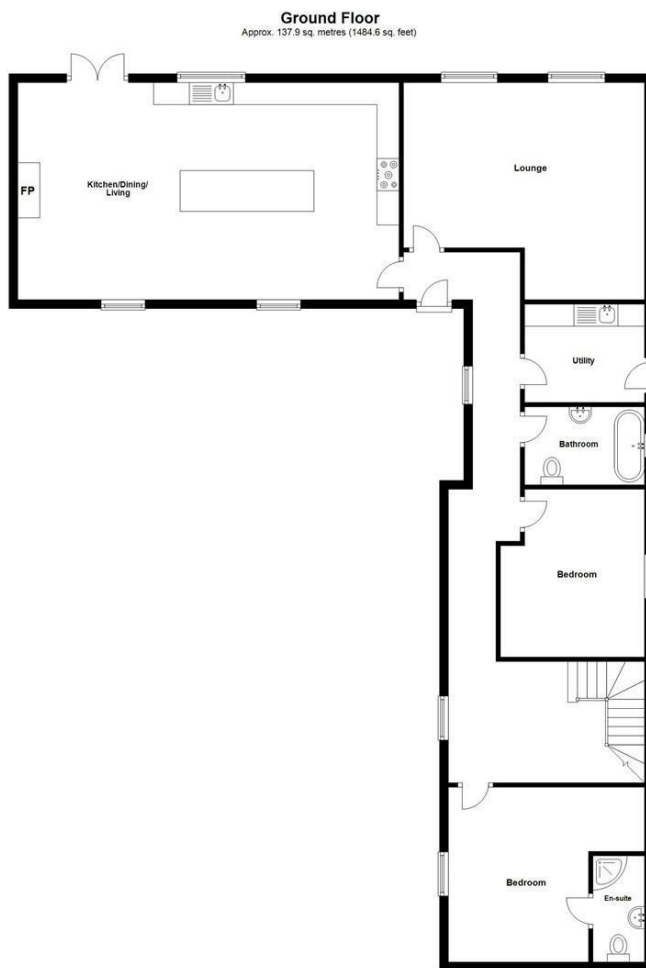
Capital / Rateable Value

£176,000. Rates Payable = £1710.37 per annum (approximately)









Energy Efficiency Rating		
	Current	Potential
Very energy efficient - lower running costs		
(92 plus) A		
(81-91) B		
(69-80) C	71	72
(55-68) D		
(39-54) E		
(21-38) F		
(1-20) G		
Not energy efficient - higher running costs		

Saintfield
1B Main Street, Saintfield, BT24 7AA
T 028 97 568300

Comber
27 Castle Street, Comber, BT23 5DY
T 028 91 8789596

Tim Martin & Company for themselves and for the vendors of this property have endeavoured to prepare these sales details as accurate and reliable as possible for the guidance of intending purchasers or lessees. These particulars are given for general guidance only and do not constitute any part of an offer or contract. The seller and us as agents, do not make any representation or give any warranty in relation to the property. We would recommend that all information contained in this brochure about the property be verified by yourself or professional advisors. Services, fittings and equipment referred to in the sales details have not been tested (unless otherwise stated) and no warranty will be given as to their condition. All measurements contained within this brochure are approximate. Please contact us prior to viewing the property. If there is any point of particular importance to you we would be pleased to provide additional information or make further enquiries. We will also confirm that the property remains available. This is particularly important if you are contemplating travelling some distance to view the property.