

Tim Martin
— .co.uk



6 William Street
Crossgar
BT30 9EF

Offers Around
£179,950

www.timmartin.co.uk
Telephone 028 91 878956

SUMMARY

An exceptional mid terrace property situated in the heart of Crossgar village, perfect for the first time buyer, young couple or families.

This beautiful home enjoys a 'show home' finish throughout, allowing the purchaser to move straight in and enjoy modern, convenient living. The property, fitted with gas fired central heating and uPVC double glazing boasts bright and spacious accommodation with the ground floor comprising of a lounge with open fire, modern fitted kitchen with spacious dining area, which overlooks the rear gardens. Upstairs, there are four excellent sized bedrooms and a bathroom fitted with a contemporary white suite.

Outside, a driveway to the front provides off street parking and leads to the integral garage with utility area. The enclosed rear gardens are laid out in lawn and provide excellent entertaining space for family and friends.

Crossgar village boasts an excellent range of shops, coffee shops and restaurants and an excellent choice of primary and secondary schools. The main A7 Downpatrick Road provides ease of access to Downpatrick and Belfast city centre by an excellent road and public transport network.

FEATURES

- Exceptional Mid Terrace Property - Perfect for the First Time Buyer, Young Couple or Families
- Lounge with Open Fire
- Modern Fitted Kitchen with Spacious Dining Area
- Four Excellent Sized Bedrooms
- Bathroom Complete with a Contemporary White Suite
- Gas Fired Central Heating and uPVC Double Glazing
- Driveway Leading to the Integral Garage with Utility Area
- Enclosed Rear Gardens Laid Out in Lawn with Patio Area
- Within Walking Distance to many Local Amenities, Schools and Public Transport
- Convenient Commuting Distance to Downpatrick and Belfast

Entrance Hall

Glazed PVC composite door with matching side light; wood laminate floor; painted tongue and groove ceiling with recessed spotlights.

Lounge

12'1 x 11'4 (3.68m x 3.45m)

Beautiful granite fireplace with matching hearth; open fire; oak fire surround; wood laminate floor; corniced ceiling; TV aerial connection point.

Kitchen / Dining Area

18'5 x 10'7 (5.61m x 3.23m)

Excellent range of modern wood laminate high and low level cupboards and drawers incorporating 1½ tub sink unit with swan neck mixer taps; integrated Samsung electric under oven with Beko 4 ring ceramic hob; extractor hood over; space and plumbing for dishwasher; space and plumbing for fridge / freezer; quartz worktops with matching upstands; wood laminate floor; glazed Upvc door to rear; built in larder cupboard.

First Floor / Landing

Access to roofspace (partially floored).

Bedroom 1

11'3 x 8'10 (3.43m x 2.69m)

Built in wardrobe.

Bedroom 2

15'11 x 11'2 (4.85m x 3.40m)

Built in sliding robes.

Bedroom 3

10'10 x 9'6 (3.30m x 2.90m)

Bedroom 4

9'6 x 7'6 (2.90m x 2.29m)

Bathroom

8'7 x 8'6 (2.62m x 2.59m)

Stunning white suite comprising curved panel bath with pillar mixer tap; separate shower cubicle with thermostatically controlled shower unit and wall mounted telephone shower attachment with mono mixer taps; close coupled WC; wood laminate floor; part tiled walls; towel radiator.

Outside

Concrete driveway leading to:-

Integral garage

24'2 x 8'9 (7.37m x 2.67m)

Roller shutter door light and power points; space and power for washing machine and tumble dryer; wood laminate worktop; glazed Upvc door to rear; Naview gas fired boiler.

Gardens

Front garden laid out in lawn; enclosed rear gardens laid out n lawn with patio area; outside light and water tap.

Tenure

Leasehold

Ground Rent

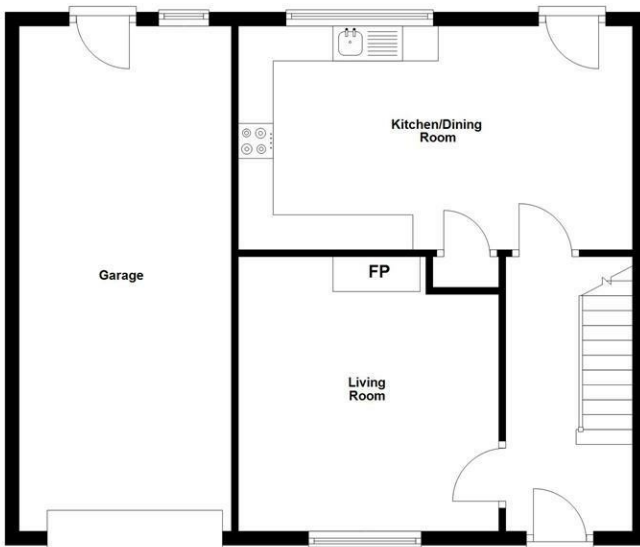
To Be confirmed

Capital / Rateable Value

£95,000. Rates Payable = £1003.00 Per Annum (Approx)

Ground Floor

Approx. 61.5 sq. metres (661.5 sq. feet)



First Floor

Approx. 63.2 sq. metres (680.6 sq. feet)



Total area: approx. 124.7 sq. metres (1342.1 sq. feet)

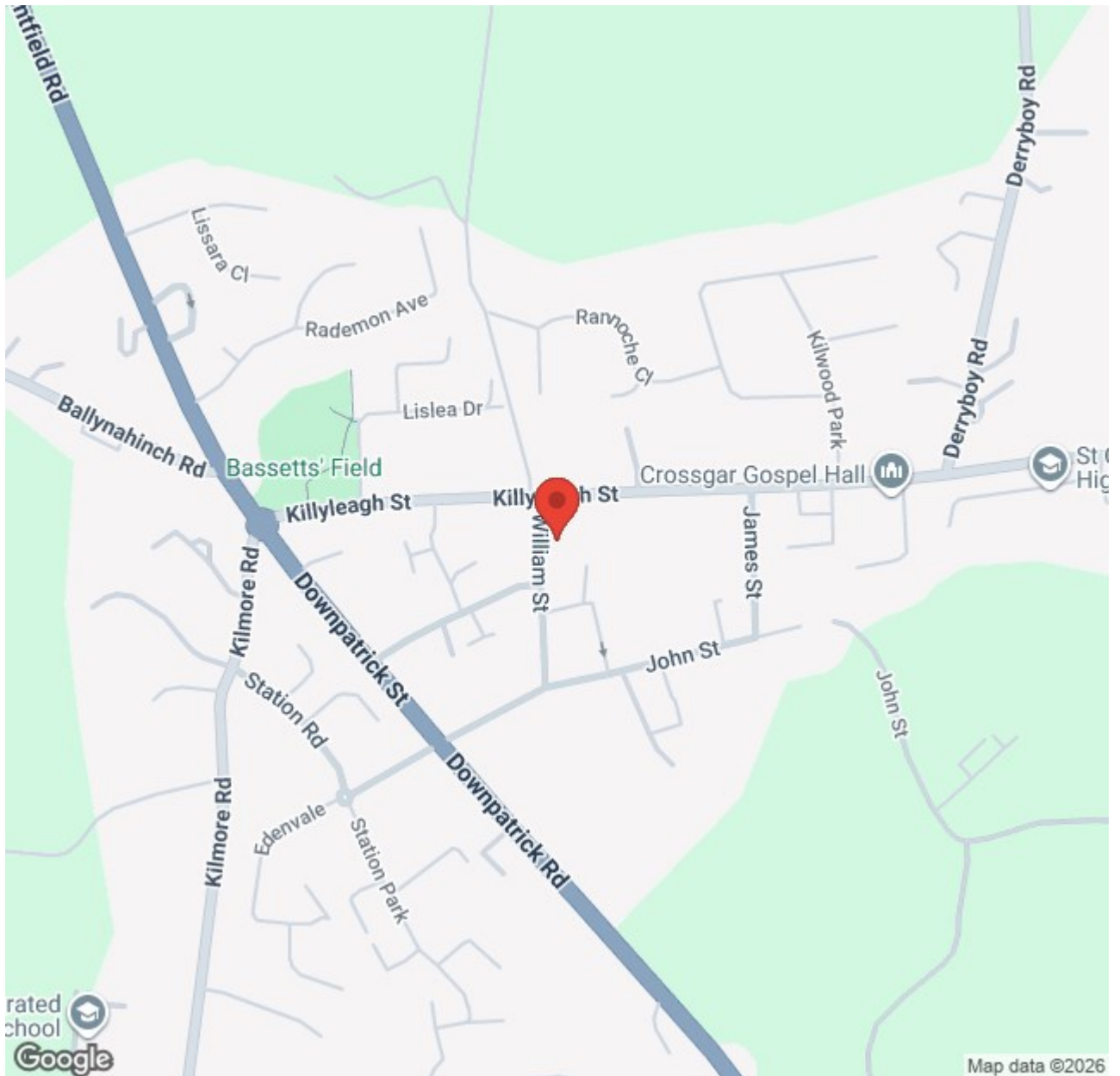
Photos and Plans by houseflyni.co.uk
Plan produced using PlanUp.

6 William Street, Crossgar









Energy Efficiency Rating		Current	Potential
Very energy efficient - lower running costs			
(92 plus) A			
(81-91) B			
(69-80) C			
(55-68) D			
(39-54) E			
(21-38) F			
(1-20) G			
Not energy efficient - higher running costs			
		69	75

Comber
 27 Castle Street, Comber, BT23 5DY
 T 028 91 8789596

Saintfield
 1B Main Street, Saintfield, BT24 7AA
 T 028 97 568300

Tim Martin & Company for themselves and for the vendors of this property have endeavoured to prepare these sales details as accurate and reliable as possible for the guidance of intending purchasers or lessees. These particulars are given for general guidance only and do not constitute any part of an offer or contract. The seller and us as agents, do not make any representation or give any warranty in relation to the property. We would recommend that all information contained in this brochure about the property be verified by yourself or professional advisors. Services, fittings and equipment referred to in the sales details have not been tested (unless otherwise stated) and no warranty will be given as to their condition. All measurements contained within this brochure are approximate. Please contact us prior to viewing the property. If there is any point of particular importance to you we would be pleased to provide additional information or make further enquiries. We will also confirm that the property remains available. This is particularly important if you are contemplating travelling some distance to view the property.