

**Tim Martin**  
— .co.uk



**2 The Hamptons  
Ballygowan  
BT23 6EB**

**Offers Around  
£279,950**

[www.timmartin.co.uk](http://www.timmartin.co.uk)  
Telephone 028 91 878956

## SUMMARY

A spacious detached split level bungalow, occupying an elevated site within this much sought after residential development in Ballygowan and within walking distance of many local amenities.

The accommodation is well appointed throughout comprising of four bedrooms, including principal bedroom ensuite, three reception rooms, fitted kitchen with casual dining area and family bathroom.

Outside, the property is approached by a private driveway providing excellent parking for several cars and makes way to the integral double garage with adjoining stores. Spacious gardens are laid out in lawn and situated to the front, side and rear of the property with a rear paved patio area providing excellent entertaining space for family and friends to relax in and enjoy.

Ballygowan village is only a short stroll away boasting a range of shops to include a butchers, pharmacy, convenience store and coffee shop, whilst Alexander Dickson and Carrickmannon Primary Schools are within close proximity. For those wishing to commute, an excellent road network and public transport service provides ease of access into Belfast city centre.

## FEATURES

- Spacious Detached Split Level Bungalow In This Much Sought After And Convenient Location
- Four Excellent Sized Bedrooms Including Principal Bedroom Ensuite
- Three Reception Rooms
- Fitted Kitchen With Casual Dining Area
- Family Bathroom Fitted With A White Suite
- Oil Fired Central Heating (2 Solar Panels Heat The Water) And Double Glazed Windows
- Spacious Driveway Leading To Integral Double Garage With Adjoining Stores
- Gardens To The Front, Side And Rear Laid Out In Lawn With Spacious Paved Patio Area
- Within Walking Distance To Ballygowan Village, Public Transport And Alexander Dickson Primary School
- Convenient Commute To Newtownards, Dundonald, Ulster Hospital And Belfast City Centre

## **Entrance Hall**

Hardwood entrance door with matching side light. access to roofspace (access via Slingsby type ladder - partially floored); telephone connection point.

## **Cloakroom**

### **Living Room**

**11'9 x 10'0 (3.58m x 3.05m )**

Raised brick fireplace with gas fire; tv aerial connection point; sliding patio door to front.

### **Lounge / Dining Area**

**22'0" x 18'0" (6.73m x 5.51m )**

L Shaped - maximum measurements.

Gas fire; slate hearth; wiring for wall lights; corniced ceiling; glazed double door to hallway.

### **Kitchen**

**18'3 x 8'4 (5.56m x 2.54m )**

Good range of oak high and low level cupboards and drawers with matching leaded glass display cupboard incorporating 1½ tub stainless steel sink unit with mixer tap; space for electric cooker; concealed extractor fan over; integrated Ariston fridge; formica worktops with matching peninsula table; tiled splashback; garden door to rear; access to lower basement / garage.

### **Bedroom 1**

**9'10 x 9'10 (3.00m x 3.00m )**

### **Bathroom**

**9'8 x 8'4 (2.95m x 2.54m )**

White suite comprising panelled bath with mono mixer tap and wall mounted telephone shower attachment; fitted sliding shower doors; pvc wall cladding; towel radiator; tiled effect laminate floor.

### **Principal Bedroom**

**14'8 x 9'10 (4.47m x 3.00m )**

Built in wardrobes with mirrored sliding doors; recessed lighting.

### **En-suite Shower Room**

**7'3 x 5'8 (2.21m x 1.73m )**

White suite comprising separate shower cubicle with thermostatically controlled shower unit and wall mounted telephone shower attachment; fitted sliding shower doors; close couples WC; pedestal wash hand basin with swan neck mixer taps; tiled walls; PVC tongue and groove ceiling.

### **Bedroom 3**

**11'11 x 10'0 (3.63m x 3.05m)**

Built-in wardrobe.

### **Bedroom 4**

**8'6 x 8'6 (2.59m x 2.59m)**

Built-in wardrobes and cupboards; wood strip floor.

## **Outside**

Spacious driveway providing excellent parking for several cars and leading to:-

### **Integral Double Garage**

**22'1 x 17'10 (6.73m x 5.44m)**

Twin up and over doors; light and power points; Grant Vortex oil fired boiler; access through to:-

### **Store 1**

**14'6 x 9'8 (4.42m x 2.95m )**

### **Store 2**

## Gardens

Front, side and rear gardens are laid out in lawn and planted with a fantastic range of ornamental and flowering shrubs; spacious paved patio area to the rear; outside lights and water tap; pvc oil storage tank.

## Tenure

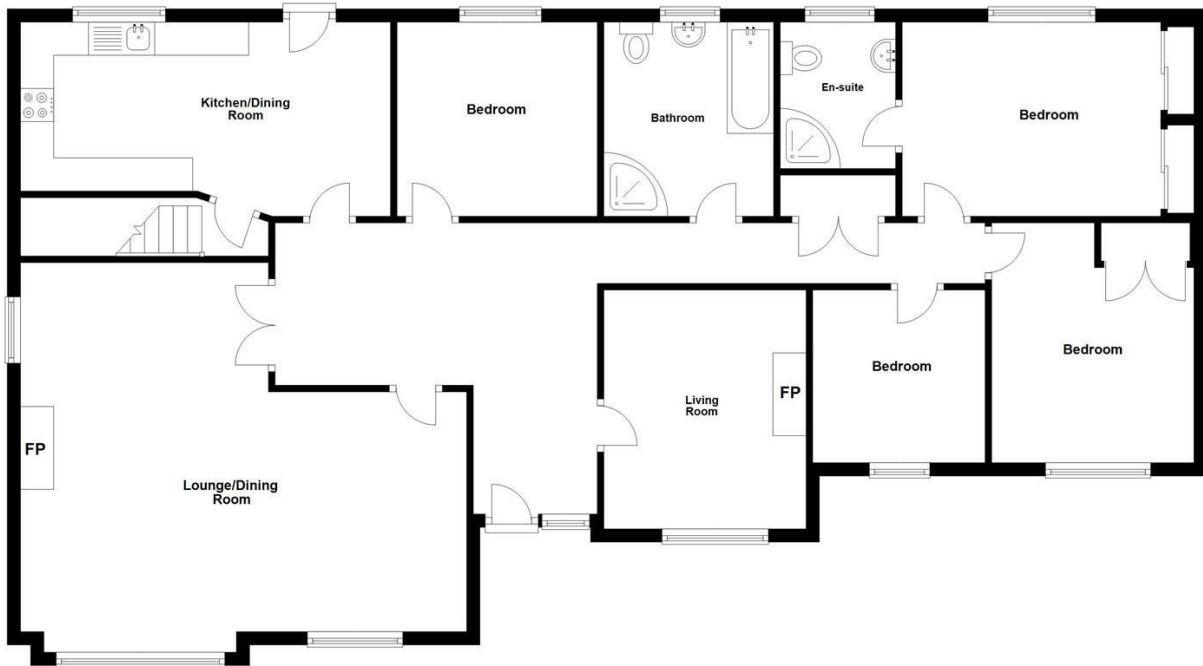
Freehold

## Capital Rateable Value

£220,000. Rates Payable + £2010.14 per annum (approx)

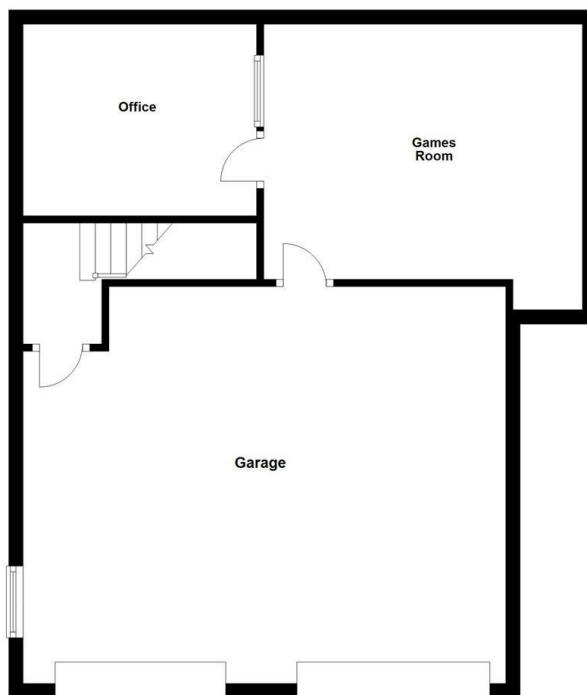
### Ground Floor

Approx. 133.3 sq. metres (1434.4 sq. feet)



### Basement

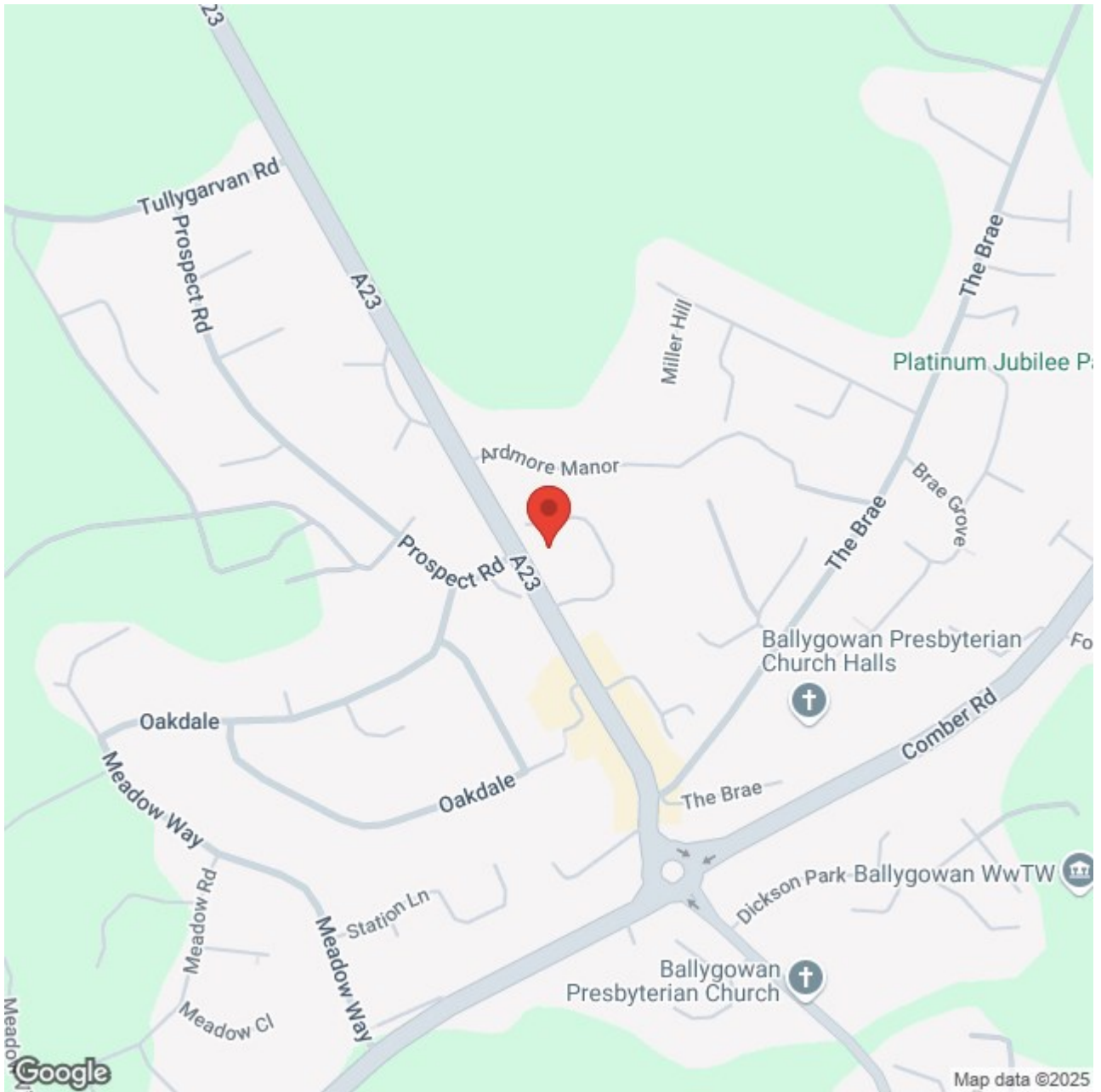
Approx. 66.2 sq. metres (712.3 sq. feet)











Energy Efficiency Rating		Current	Potential
Very energy efficient - lower running costs			
(92 plus)	A		
(81-91)	B		
(69-80)	C		
(55-68)	D		
(39-54)	E		
(21-38)	F		
(1-20)	G		
Not energy efficient - higher running costs			
		55	71

Comber  
 27 Castle Street, Comber, BT23 5DY  
 T 028 91 8789596

Saintfield  
 1B Main Street, Saintfield, BT24 7AA  
 T 028 97 568300

Tim Martin & Company for themselves and for the vendors of this property have endeavoured to prepare these sales details as accurate and reliable as possible for the guidance of intending purchasers or lessees. These particulars are given for general guidance only and do not constitute any part of an offer or contract. The seller and us as agents, do not make any representation or give any warranty in relation to the property. We would recommend that all information contained in this brochure about the property be verified by yourself or professional advisors. Services, fittings and equipment referred to in the sales details have not been tested (unless otherwise stated) and no warranty will be given as to their condition. All measurements contained within this brochure are approximate. Please contact us prior to viewing the property. If there is any point of particular importance to you we would be pleased to provide additional information or make further enquiries. We will also confirm that the property remains available. This is particularly important if you are contemplating travelling some distance to view the property.