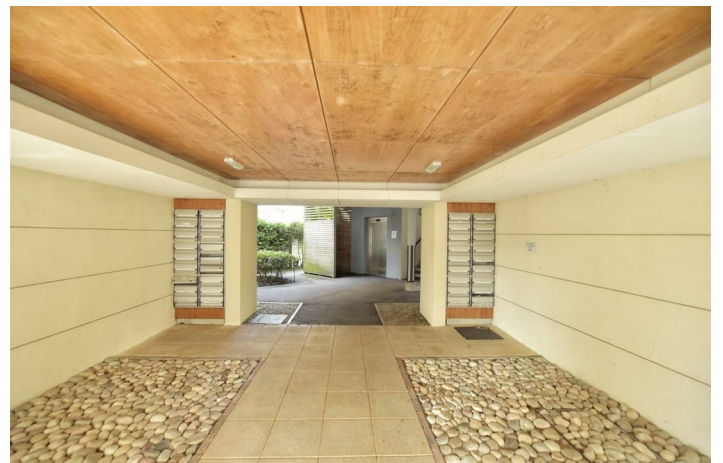
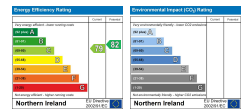




27 Shaftesbury Drive
 Bangor, BT20 3GF

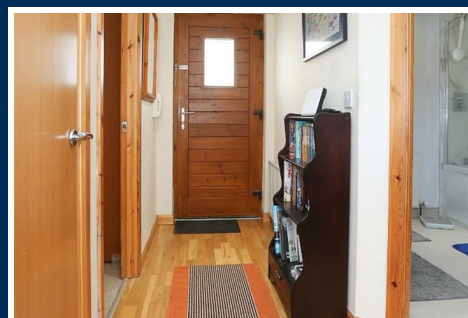
Offers over
 £137,500



27 Shaftesbury Drive

, Bangor, BT20 3GF

Offers over £137,500



If you are looking for a modern apartment close to the city centre and transport links to Belfast, Shaftesbury Drive is the answer. This apartment offers a fresh and modern living space that is sure to appeal to a variety of buyers.

Internally, the property provides a contemporary living environment and of particular note is the generous sized living/dining area and fitted kitchen with a range of built-in appliances. There are two well-proportioned bedrooms and a three piece white bathroom suite. Gas heating, double glazing and modern construction means that this apartment will be easy to heat and have low running costs. There is also allocated covered parking so you will never have the worry of finding a space. All apartments above the ground floor are serviced by a lift.

Whether you are a first-time buyer, a young professional, Investor or looking to downsize, this apartment offers a fantastic opportunity to live in a desirable location with all the amenities you need close at hand. Don't miss the chance to make this lovely apartment your new home.

Communal Entrance

Lift and stair access to third floor.

Entrance Hall

Intercom, Laminate wooden flooring, storage cupboard with gas boiler.

Lounge 16'4" x 10'10" (5.00 x 3.31)

Double glazed door to balcony. Sliding partitioning door to.....

Kitchen 8'4" x 7'6" (2.56 x 2.30)

High and low level units, stainless steel single drainer sink unit with mixer tap, four ring nordmende ceramic hob, electric under oven, stainless steel extractor fan, space for fridge freezer, plumbed for washing machine, tiled floor, part tiled walls.

Bedroom One 10'9" x 11'8" (3.28 x 3.56)

Bedroom Two 8'3" x 8'5" (2.54 x 2.59)

Bathroom 8'4" x 7'10" (2.55 x 2.39)

White suite comprising, panelled bath with shower over, vanity wash hand basin, low flush WC, part tiled walls, tiled floor.

These particulars, whilst believed to be accurate are set out as a general outline only for guidance and do not constitute any part of an offer or contract. Intending purchasers should not rely on them as statements of representation of fact, but must satisfy themselves by inspection or otherwise as to their accuracy. No person in this firms employment has the authority to make or give any representation or warranty in respect of the property.



Road Map



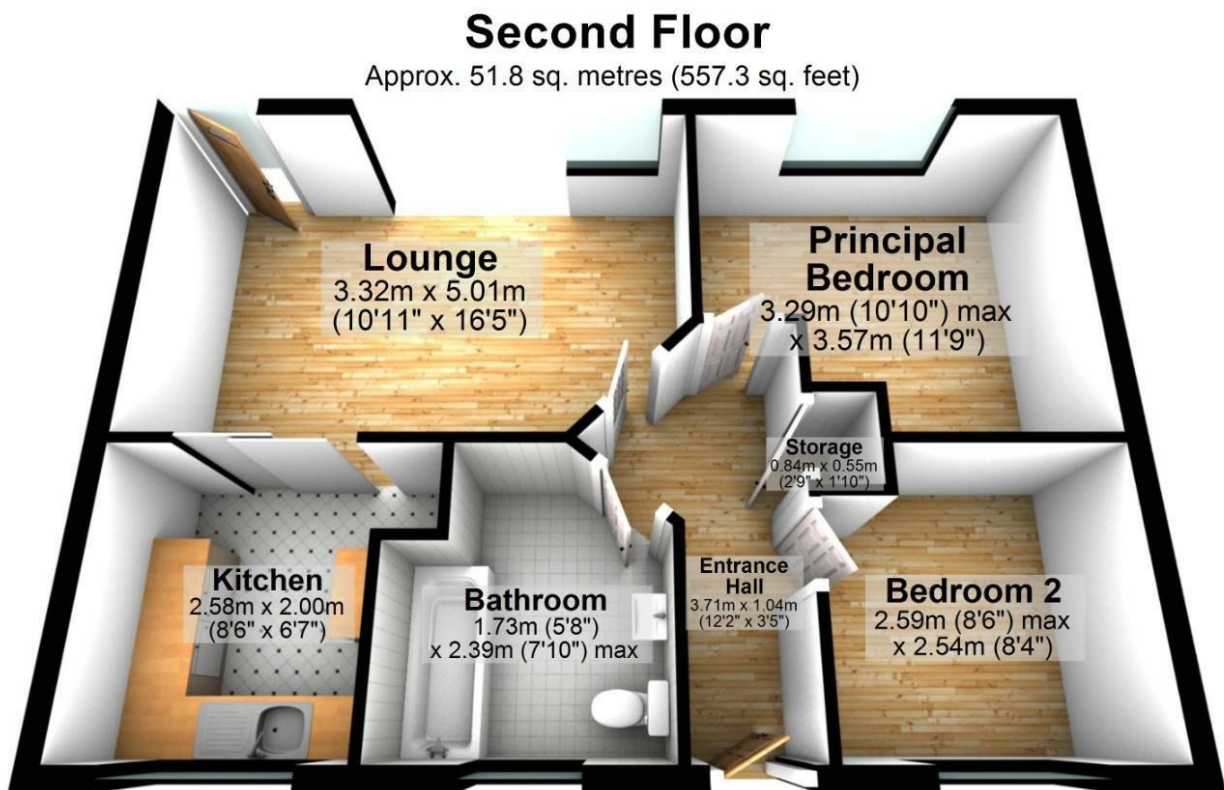
Hybrid Map



Terrain Map



Floor Plan



VIEWING STRICTLY BY APPOINTMENT WITH OUR OFFICE

These particulars, whilst believed to be accurate are set out as a general outline only for guidance and do not constitute any part of an offer or contract. Intending purchasers should not rely on them as statements of representation of fact, but must satisfy themselves by inspection or otherwise as to their accuracy. No person in this firm's employment has the authority to make or give any representation or warranty in respect of the property.