

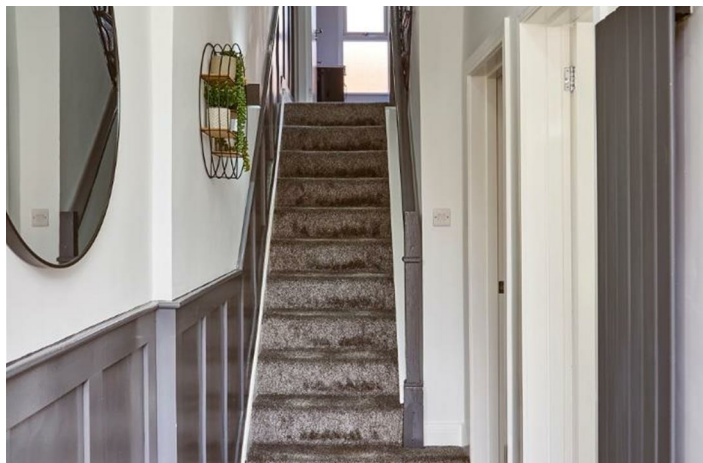
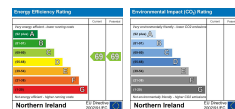


1 Glantane Drive

Off Antrim Road, Belfast, BT15 3FE

Offers in excess of

£225,000



1 Glantane Drive

Off Antrim Road, Belfast, BT15 3FE

Offers in excess of £225,000



OPEN VIEWING - MONDAY 1ST SEPTEMBER
BETWEEN 1.30PM AND 2.15PM

Elegant Four-Bedroom Edwardian Townhouse on a Charming Tree-Lined Avenue, just off the Antrim Road.

This beautifully presented property combines timeless character with modern comfort, offering spacious accommodation in a highly sought-after location. Retaining many original features, the home is enhanced by high ceilings, stunning bay windows, and high-quality flooring throughout.

The heart of the home is a luxury Royal Blue fitted kitchen, complemented by a stylish modern bathroom suite. Four well-proportioned bedrooms provide versatile living—perfect for families, professionals, or those in need of guest rooms and a home office.

Practical benefits include gas heating and full UPVC double glazing for year-round efficiency. To the rear, a superb decked yard creates the ideal setting for entertaining, al fresco dining, or simply unwinding in private.

Situated on a picturesque, tree-lined avenue, the property enjoys a peaceful neighborhood with a strong community feel. Excellent local amenities are just a short stroll away, including well-regarded schools, green parks, convenient transport links,

shopping areas, and a vibrant mix of cafes and restaurants.

This is a rare opportunity to acquire a desirable townhouse that balances charm, modern comfort, and a fantastic location.

Ground Floor

Entrance Hallway

Composite front door with glass inset, tiled flooring, anthracite vertical radiator, spot lighting, stairs leading to first floor

Living Room 14'11" x 9'4" (4.55m x 2.86m)

Into bay, double panelled radiator, spot lighting, enclosed electricity meter

Dining Room 10'6" x 9'9" (3.21m x 2.98m)

Herringbone ceramic tiling, enclosed storage cupboard housing gas boiler, feature wine rack, spot lighting, under stair storage, leading to:

Kitchen 11'1" x 6'5" (3.40m x 1.96m)

Exceptional royal blue fitted kitchen with copper handles, tiled splash backs and contrasting worktops, sink with mixer tap, integrated oven and hob with extractor hood, fridge freezer space, plumbed for a washing machine, herringbone ceramic flooring, anthracite vertical radiator, recessed lighting, sliding patio door leading to rear decked area

First Floor

Recessed and spot lighting, feature wood panelling, stairs leading to second floor

Bathroom

Classic white three piece bathroom suite including low flush WC, wall mounted wash and basin and 'P' shaped panelled bath with shower attachment overhead, tiled flooring and feature wall tiled splash backs, heated towel rail, recessed lighting, access to roof space

Primary Bedroom 15'0" x 14'7" (4.59m x 4.46m)

Into bay, double panelled radiator, spot lighting

Rear Bedroom 10'5" x 8'0" (3.20m x 2.44m)

Double panelled radiator, spot lighting

Second Floor 11'4" x 14'6" (3.46m x 4.43m)

Double panelled radiator

Front Bedroom 11'3" x 14'6" (3.44m x 4.43m)

Double panelled radiator, spot lighting

Rear Bedroom 10'5" x 8'2" (3.18m x 2.51m)

Double panelled radiator, spot lighting

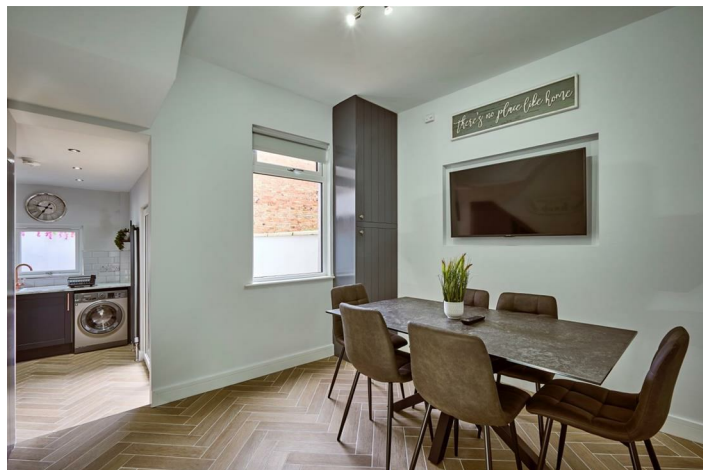
Outside

Front

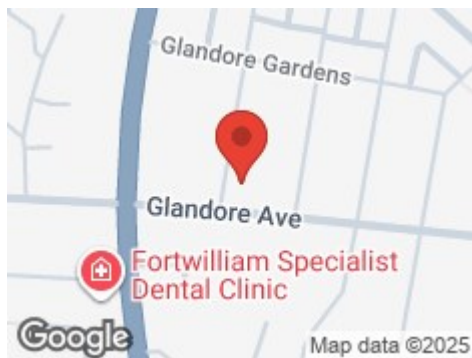
Wood panelled privacy fencing and entrance gate, paved courtyard

Rear

Fully decked yard with access to rear entry, exterior lighting



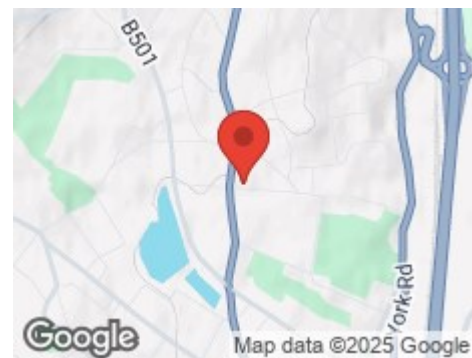
Road Map



Hybrid Map



Terrain Map



Floor Plan

VIEWING STRICTLY BY APPOINTMENT WITH OUR OFFICE

These particulars, whilst believed to be accurate are set out as a general outline only for guidance and do not constitute any part of an offer or contract. Intending purchasers should not rely on them as statements of representation of fact, but must satisfy themselves by inspection or otherwise as to their accuracy. No person in this firm's employment has the authority to make or give any representation or warranty in respect of the property.