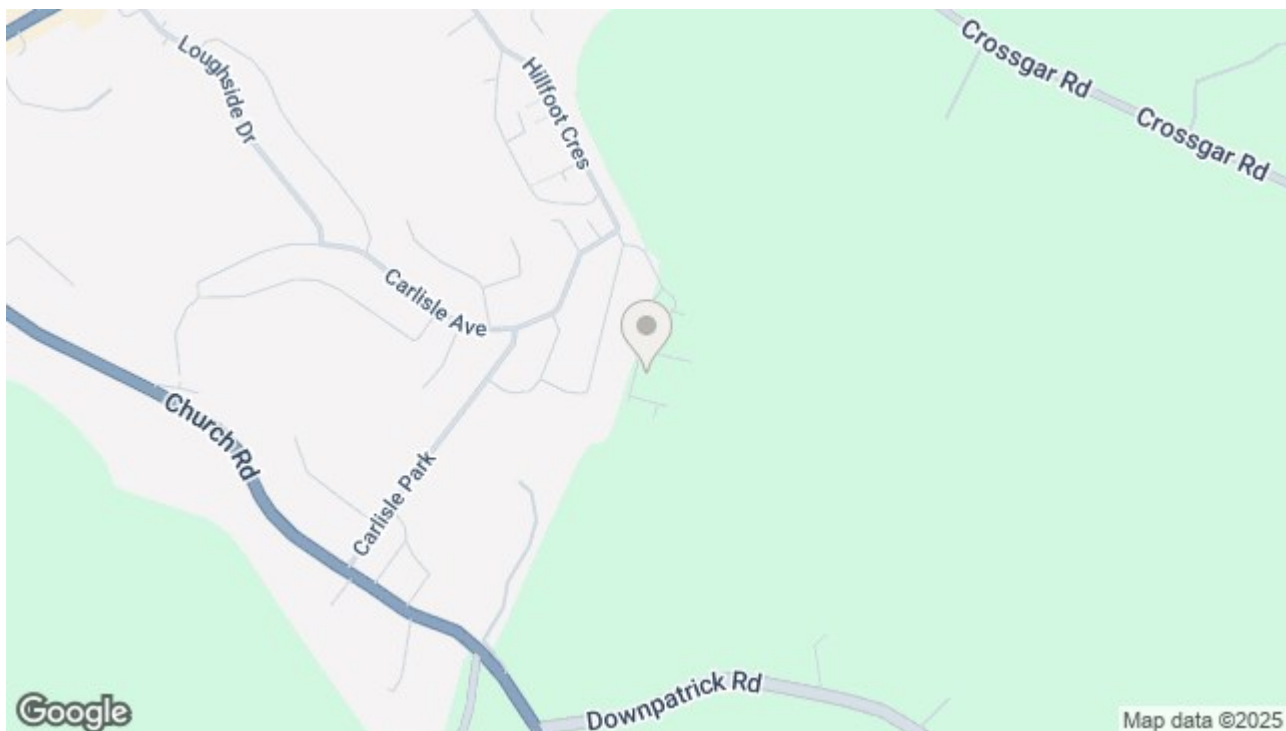




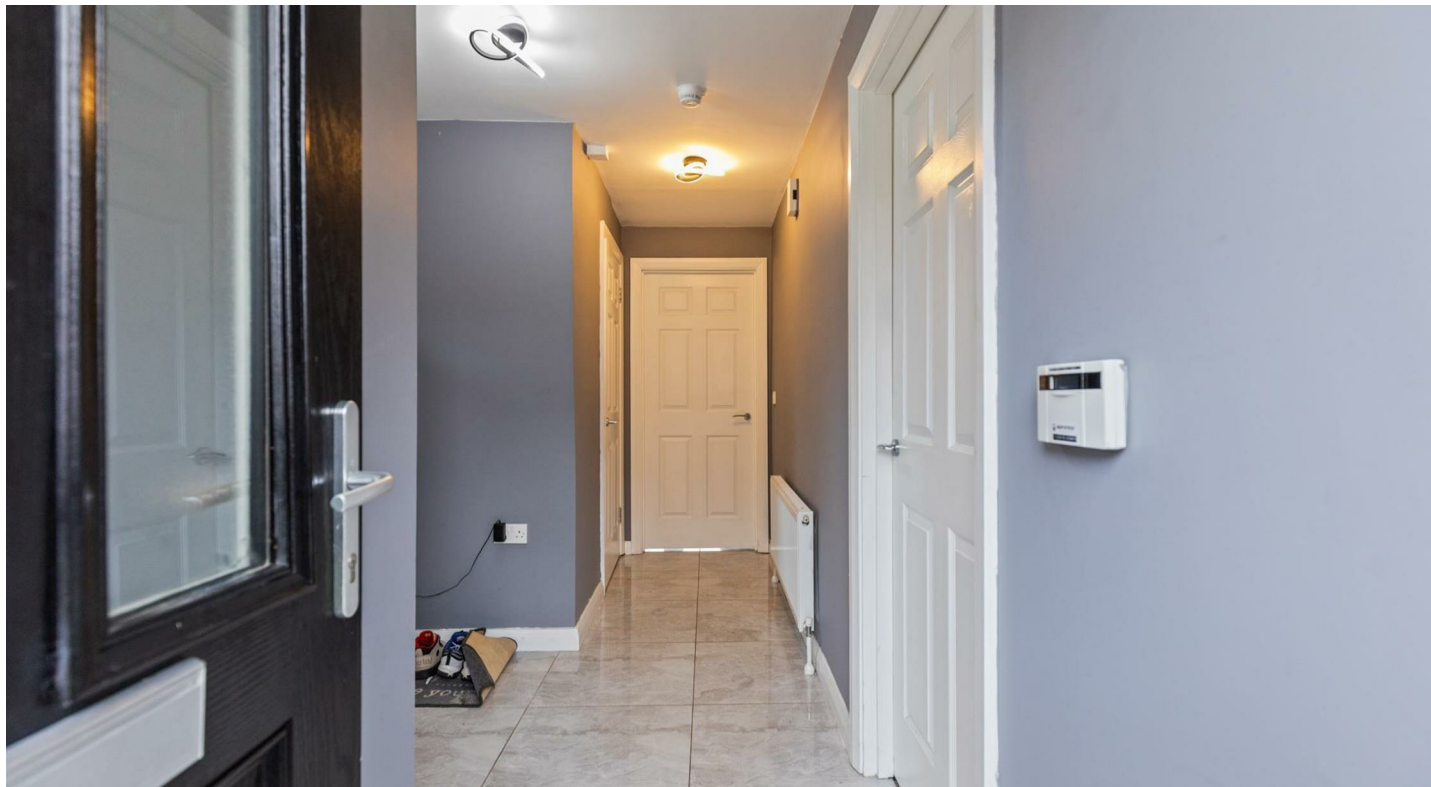
77 MILLBANK GROVE, BALLYNAHINCH, DOWN, BT24 8WQ



OFFERS AROUND £199,950



We are delighted to offer for sale this beautifully presented semi detached home in this popular residential area in Ballynahinch. The property is only 4 years old and comprises living room with stove, modern fitted kitchen with dining area, downstairs cloakroom, three bedrooms (master en-suite) and a family bathroom. Only on internal inspection will you truly appreciate the show house style feel along with the high specification of finish used throughout the kitchen, bathroom and living room. With so much to offer in this fantastic family home plus being within easy commuting distance to both Belfast and Lisburn, we recommend early viewing.



## At a glance:

- Semi detached home
- Living room
- Master bedroom ensuite
- Beautifully presented
- Large garden
- Three bedrooms
- Kitchen/ dining area
- Family bathroom
- Popular location
- Paved driveway

### Entrance Hall

6'7" x 12'9"

Pvc glazed door to spacious entrance hall with tiled floor.

### Living Room

14'10" x 11'9"

Bright spacious living room with wooden laminate flooring. Multi fuel stove with granite hearth.

### WC

3'6" x 6'5"

White suite comprising low flush w.c and wash hand basin. Tiled floor and splash.

### Kitchen/Dining Room

8'5" x 22'4"

A range of high and low level units including integrated oven, hob, fridge freezer and dishwasher. Stainless steel sink unit with single drainer. Tiled floor. Double doors to rear. Dining area.

### Store

4'7" x 3'0"

### Landing

5'9" x 3'10"

Window to side.

### Bedroom 1

12'1" x 10'9"

Rear facing bedroom with en-suite.

### En-suite

5'10" x 5'10"

White suite comprising low flush w.c, wash hand basin and shower cubicle. Tiled flooring and tiled splash.

### Bedroom 2

11'3" x 10'3"

Front facing room.

### Bathroom

10'0" x 5'0"

White suite comprising low flush w.c, wash hand basin and panel bath with overhead shower. Tiled flooring and tiled splash area.

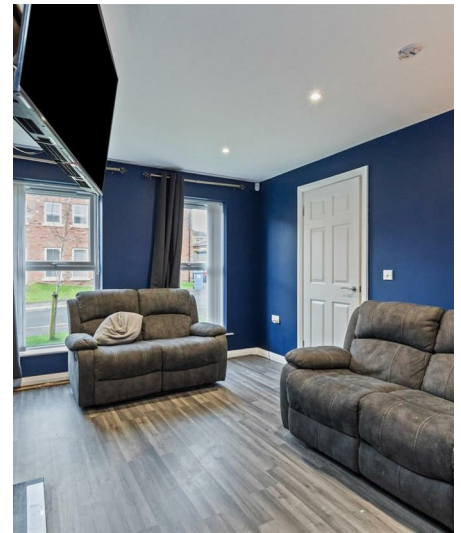
### Bedroom 3

9'6" x 11'3"

Front facing room.

### OUTSIDE

To the front is a large garden laid out in lawns with a brick paved driveway. To the rear is an enclosed garden laid out in lawns with a paved patio area.



















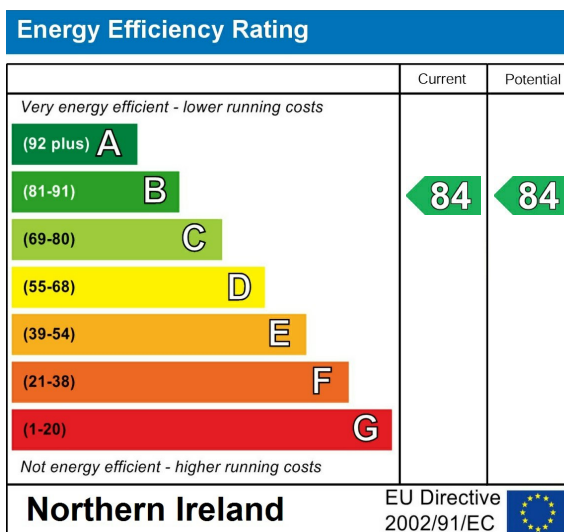






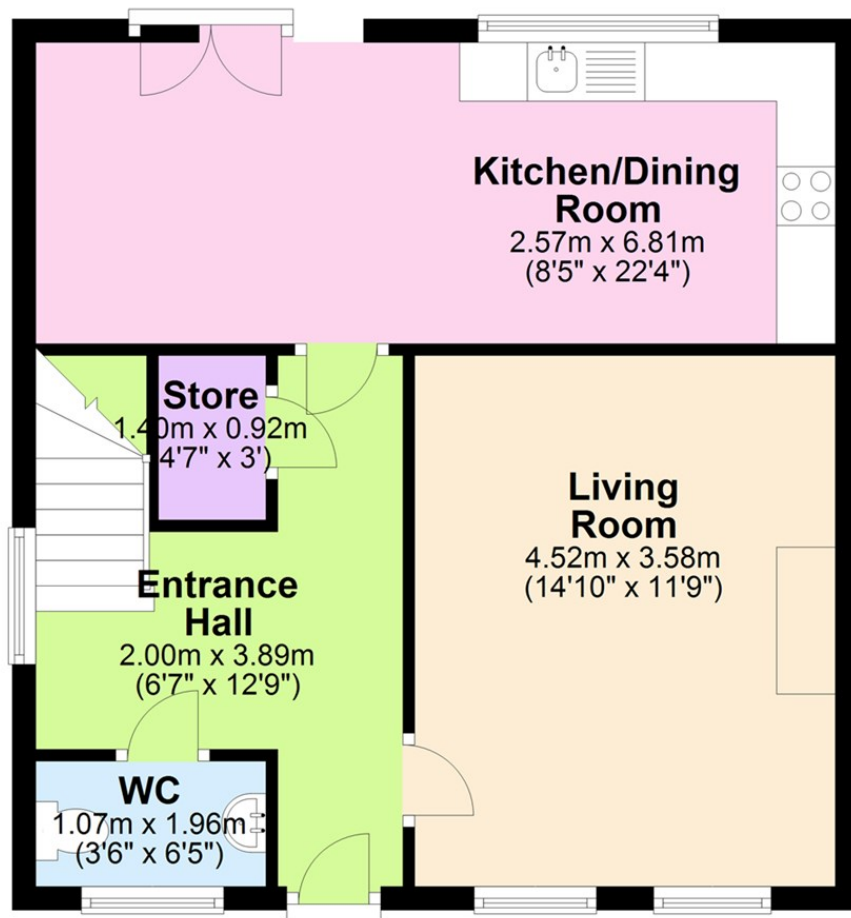








## Ground Floor



Questions you may have. **Which mortgage would suit me best?**

**How much deposit will I need? What are my monthly repayments going to be?**

To answer these and other mortgage related questions contact our mortgage advisor on 0289 756 1155.

Your home may be repossessed if you do not keep up repayments on your mortgage.

**We DO NOT charge for initial mortgage consultations. We may charge a fee on completion depending on circumstances. Our typical fee is £250, however, please confirm with Mortgage Consultant at time of appointment.**

Please note that we have not tested the services or systems in this property. Purchasers should make/commission their own inspections if they feel it is necessary.

ULSTERPROPERTYSALES.CO.UK

ANDERSONSTOWN  
028 9060 5200

BALLYHACKAMORE  
028 9047 1515

BALLYNAHINCH  
028 9756 1155

BANGOR  
028 9127 1185

CARRICKFERGUS  
028 9336 5986

CAVEHILL  
028 9072 9270

DONAGHADEE  
028 9188 8000

DOWNPATRICK  
028 4461 4101

FORESTSIDE  
028 9064 1264

GLENGORMLEY  
028 9083 3295

MALONE  
028 9066 1929

RENTAL DIVISION  
028 9070 1000



Petrie Enterprises Ltd; Trading under licence as Ulster Property Sales (Ballymena) Gareth Dallas  
©Ulster Property Sales is a Registered Trademark