

30 DRUMLIN VIEW

Dromore BT25 1TS

- Detached home
- Three bedrooms
- Master Bedroom ensuite
- Living room
- Utility room
- Kitchen with dining area
- Downstairs w.c
- Family bathroom
- Garage
- Large garden

Energy Efficiency Rating		
	Current	Potential
Very energy efficient - lower running costs		
(92 plus) A		
(81-91) B		
(69-80) C		
(55-68) D		
(39-54) E		
(21-38) F		
(1-20) G		
Not energy efficient - higher running costs		
Northern Ireland		
		EU Directive 2002/91/EC

Offers Around £265,000

30 Drumlin View

, Dromore, BT25 1TS



Entrance Hall

Bright entrance hall with wooden laminate flooring

Living Room

13'9" x 15'5" (4.20m x 4.70m)
Spacious living room with wooden laminate flooring and feature wood burning stove.

Kitchen/Dining Room

11'2" x 17'5" (3.40m x 5.30m)
A range of high and low level unit including stainless steel sink unit, integrated oven, hob, dishwasher, fridge freezer and extractor fan. Tiled floor. Double doors to rear.

Utility Room

7'10" x 5'11" (2.40m x 1.80m)
Range of high and low level unit including stainless steel sink unit and

space for washing machine and tumble dryer. Door to rear.

WC

2'11" x 5'11" (0.90m x 1.80m)
white suite comprising low flush w.c and wash hand basin. Tiled floor.

Landing

7'5" x 13'1" (2.26m x 4.00m)
Landing with access to large hotpress.

Bedroom 1

13'9" x 10'6" (4.20m x 3.20m)
Front facing bedroom with ensuite.

En-suite

5'3" x 5'9" (1.60m x 1.75m)
White suite comprising low flush w.c, wash hand basin and shower cubicle. Tiled floor and splash areas.

Bedroom 2

11'10" x 10'6" (3.60m x 3.20m)
Rear facing bedroom.

Bathroom

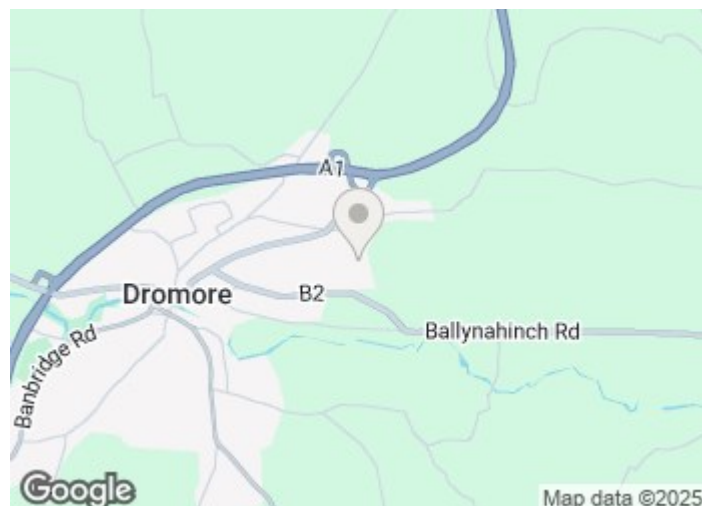
11'10" x 6'2" (3.60m x 1.88m)
White suite comprising low flush w.c, panel bath, shower cubicle and wash hand basin. Tiled floor and splash areas.

Bedroom 3

7'10" x 13'1" (2.40m x 4.00m)
Rear facing bedroom.

Garage

Roller door and door to side.

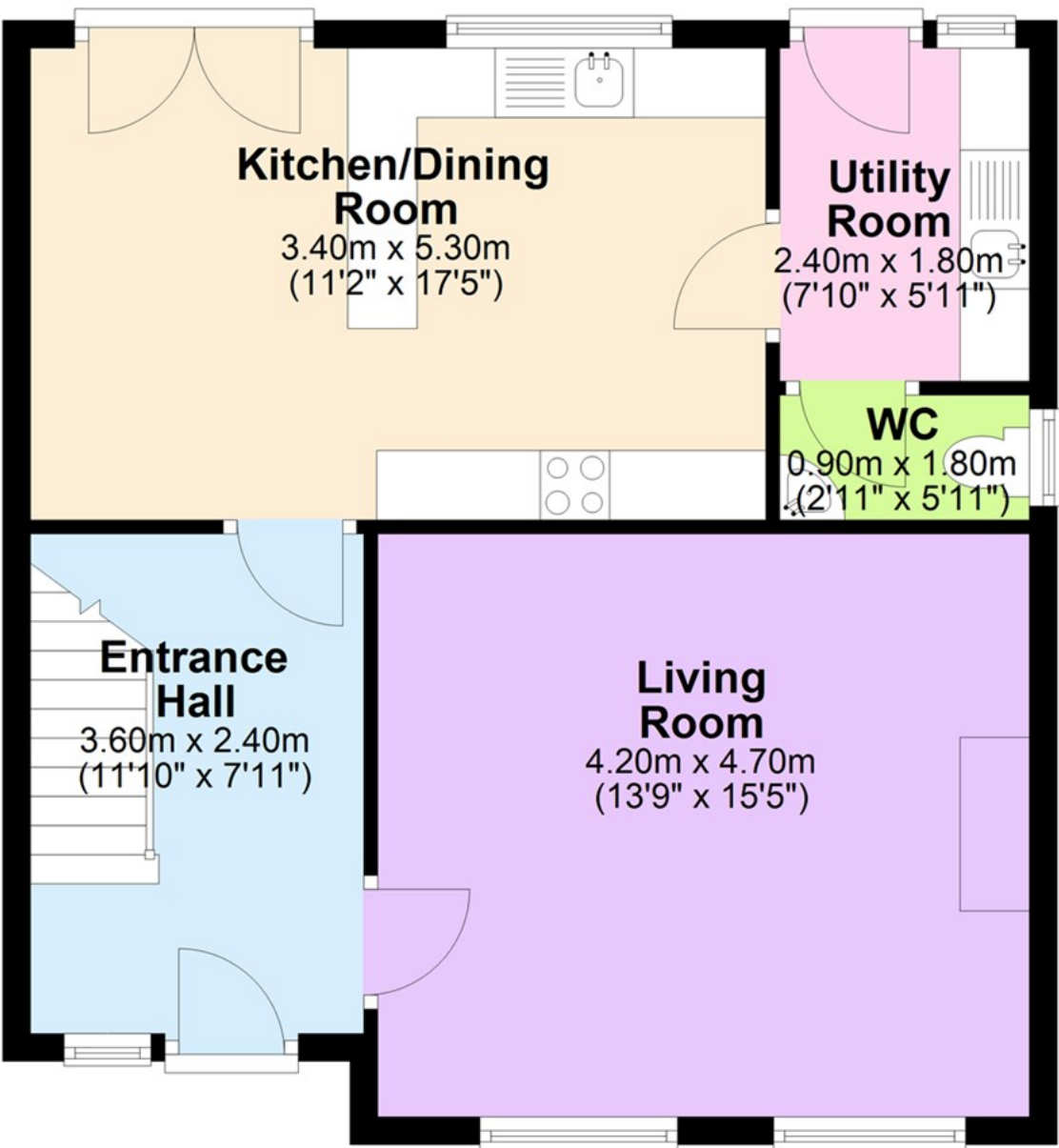


Directions

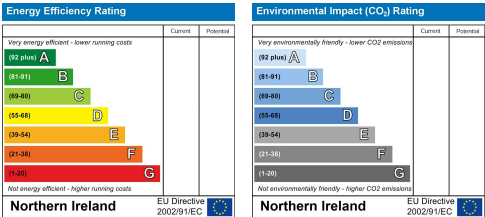


Floor Plan

Ground Floor



These particulars, whilst believed to be accurate are set out as a general outline only for guidance and do not constitute any part of an offer or contract. Intending purchasers should not rely on them as statements of representation of fact, but must satisfy themselves by inspection or otherwise as to their accuracy. No person in this firms employment has the authority to make or give any representation or warranty in respect of the property.



ULSTERPROPERTYSALES.CO.UK

ANDERSONSTOWN 028 9060 5200	BANGOR 028 9127 1185	DOWNPATRICK 028 4461 4101	GLENGORMLEY 028 9083 3295	RENTAL DIVISION 028 9070 1000
BALLYHACKAMORE 028 9047 1515	CARRICKFERGUS 028 9336 5986	DONAGHADEE 028 9188 8000	MALONE 028 9066 1929	
BALLYNAHINCH 028 9756 1155	CAVEHILL 028 9072 9270	FORESTSIDE 028 9064 1264	NEWTOWNARDS 028 9181 1444	

The Property Ombudsman
SALES

OFT
Approved code

Aaron Ferris trading under licence as Ulster Property Sales (Ballynahinch)
©Ulster Property Sales is a Registered Trademark