



Apt 1 Woodlands Manor, Stockmans Way, Belfast, BT9 7GL

Price Guide £160,000

Beautifully presented apartment located in the popular Woodlands Manor development just at the bottom of Stockmans Lane in South Belfast. On the first floor, the accommodation is bright and spacious throughout and comprises open plan living, dining & modern fitted kitchen, two double bedrooms (master with en-suite shower room) and white bathroom suite. Further benefits include PVC glazed windows, gas heating, balcony from living room and secure car parking. Suitable for a range of potential purchasers, including first time buyers, investors or those wanting a hub with easy access to main arterial routes, viewing is highly recommended.

- Excellent First Floor Apartment
- Bright And Spacious Accommodation Throughout
- Family Bathroom Suite
- PVC Glazed Windows
- Open Plan Living / Dining & Kitchen
- Two Bedrooms (master with en-suite)
- Secure Gated Development With Allocated Parking

Energy Efficiency Rating		
	Current	Potential
Very energy efficient - lower running costs		
(92-100) A		
(81-91) B		
(69-80) C		
(55-68) D		
(39-54) E		
(21-38) F		
(1-20) G		
Not energy efficient - higher running costs		
Northern Ireland		
EU Directive 2002/91/EC		

**THE ACCOMMODATION COMPRISES
ON THE GROUND FLOOR
COMMUNAL ENTRANCE
ON THE FIRST FLOOR
APARTMENT 1
ENTRANCE**



Hardwood front door, laminate wood floor, recessed spotlighting, storage off hallway.

**OPEN PLAN KITCHEN / LIVING / DINING
28'7 x 12'6 (8.71m x 3.81m)**



Laminate flooring, recessed spotlighting and access to balcony.

MODERN FITTED KITCHEN



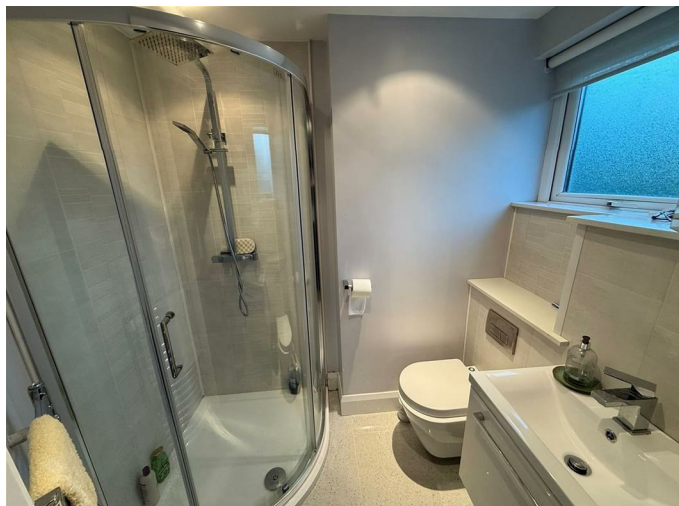
Range of high and low level units, integrated appliances to include fridge / freezer, oven, 4 ring gas hob & stainless steel extractor fan, built washing machine & dishwasher, Ideal gas fired boiler, part tiled walls and tiled floor.

BEDROOM ONE 17'0 x 10'0 (5.18m x 3.05m)



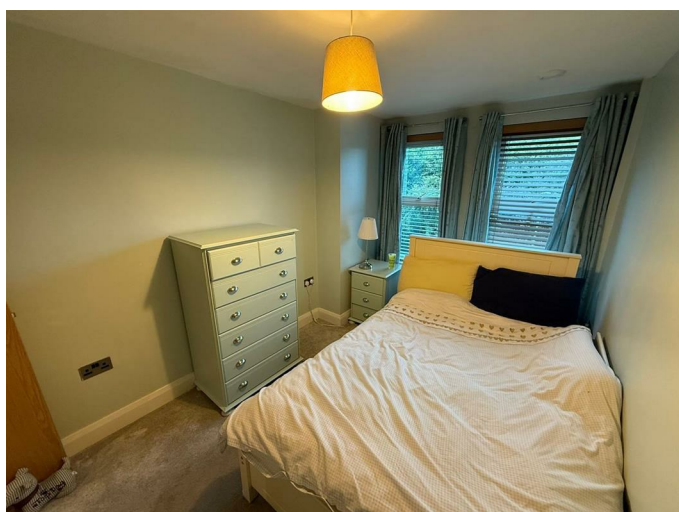
Laminate flooring.

ENSUITE SHOWER ROOM



White suite comprising low flush W.C, wash hand basin with built in storage, enclosed shower, heated towel rail, tile clad walls and tiled flooring.

BEDROOM TWO 12'5 x 7'6 (3.78m x 2.29m)



BATHROOM 10'0 x 6'1 (3.05m x 1.85m)



White suite comprising low flush W.C,

pedestal wash hand basin, panel bath with shower over.

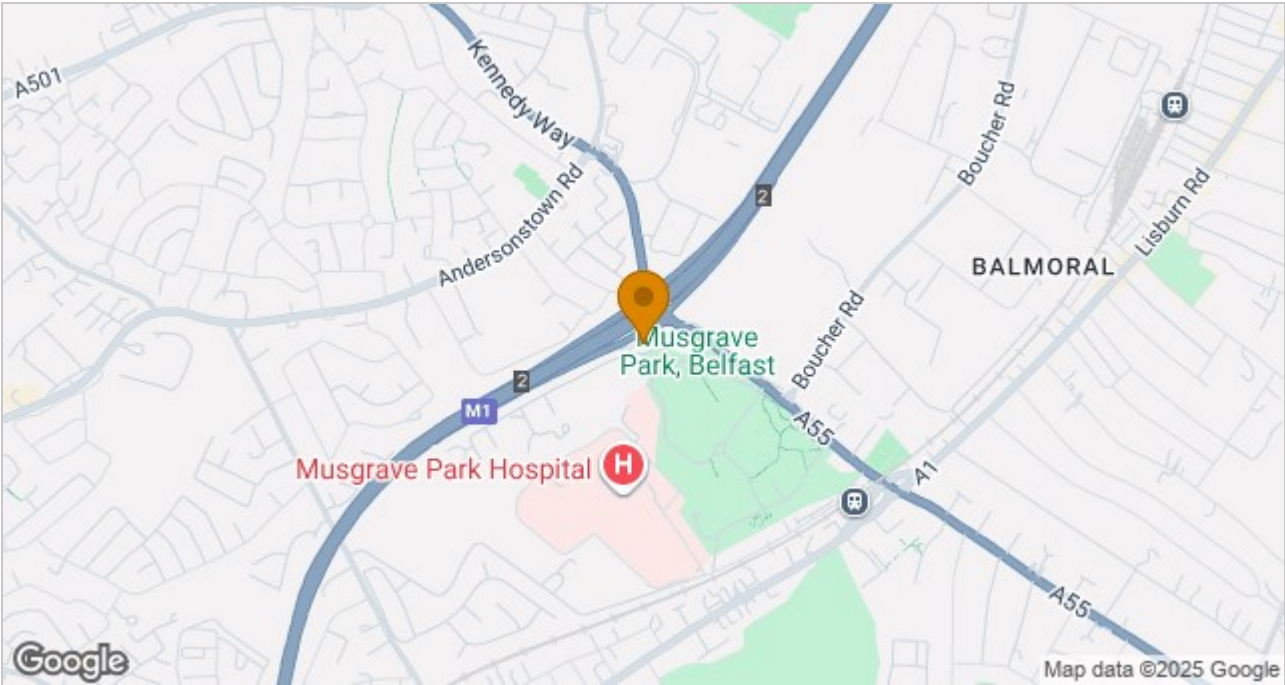
OUTSIDE



Gated development with electric & pedestrian gate access. Allocated car parking space.

Floor Plan

Area Map



These particulars, whilst believed to be accurate are set out as a general outline only for guidance and do not constitute any part of an offer or contract. Intending purchasers should not rely on them as statements of representation of fact, but must satisfy themselves by inspection or otherwise as to their accuracy. No person in this firms employment has the authority to make or give any representation or warranty in respect of the property.

ULSTERPROPERTYSALES.CO.UK

ANDERSONSTOWN 028 9060 5200	BANGOR 028 9127 1185	DONAGHADEE 028 9188 8000	GLENGORMLEY 028 9083 3295	RENTAL DIVISION 028 9070 1000
BALLYHACKAMORE 028 9047 1515	CARRICKFERGUS 028 9336 5986	DOWNPATRICK 028 4461 4101	MALONE 028 9066 1929	
BALLYNAHINCH 028 9756 1155	CAVEHILL 028 9072 9270	FORESTSIDE 028 9064 1264	NEWTOWNARDS 028 9181 1444	



John Thompson trading under licence as Ulster Property Sales (Downpatrick)
©Ulster Property Sales is a Registered Trademark